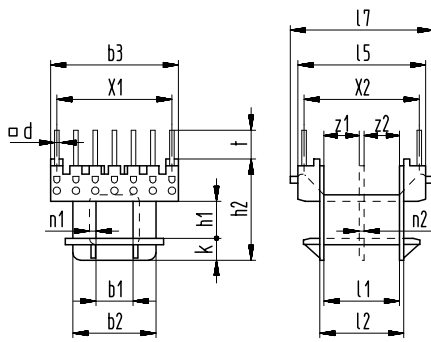
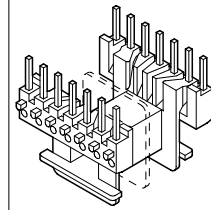


Sketch with main dimensions



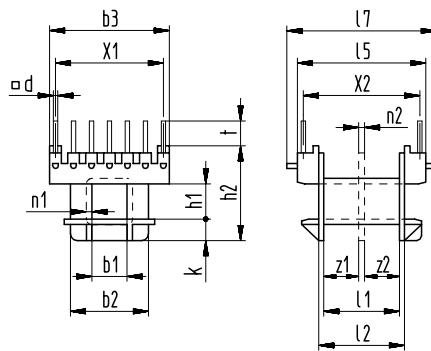
Standard: fully pinned, partial fitting on request.

ST
with molded-in pins □ 0,6 mm



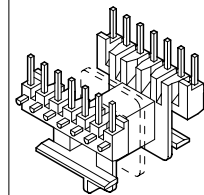
z1 ±0,1	z2 ±0,1	b1 ±0,1	b2 ±0,1	b3 ±0,2	h1 ±0,1	h2 ±0,2	k ±0,1	l1 ±0,1	l2 ±0,2	l5 ±0,2	l7 ±0,2	n1 +0,2	n2 ±0,1	t ±0,2	X1 ±0,2	X2 ±0,2	X3 ①	Type	Art. No.
-	-	5	11	16,9	5	13,4	2,8	10,1	11,1	16,8	18,9	0,5	-	3,9	6x2,54	15,24	2x7	EE 16/4,9/1 ST with bores for ventilation	Wz 7776/1 ST 3449
-	-	5	11	16,9	5	13,4	2,8	10,1	11,1	16,8	18,9	0,5	-	3,9	6x2,54	15,24	2x7	EE 16/4,9/1 ST without bores for ventilation	Wz 7776/1 ST 3520

Sketch with main dimensions



Standard: fully pinned, partial fitting on request.

ST
with pins □ 0,6 mm



z1 ±0,1	z2 ±0,1	b1 ±0,1	b2 ±0,1	b3 ±0,2	h1 ±0,1	h2 ±0,2	k ±0,1	l1 ±0,1	l2 ±0,2	l5 ±0,2	l7 ±0,2	n1 +0,2	n2 ±0,1	t ±0,2	X1 ±0,2	X2 ±0,2	X3 ①	Type	Art. No.
4,7	4,7	5	11	16,9	5	13,4	3	10	11	16,8	18,9	0,6	0,6	3,5	6x2,54	15,24	2x7	EE 16/4,9/1 ST EE 16/4,9/2 ST	Wz 7857/1 ST Wz 7857/2 ST 3624 3638

① X3 = max. number of slots or terminals