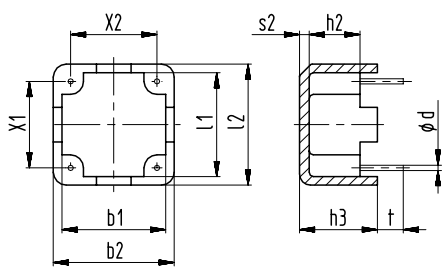


Sketch with main dimensions



Preferably used for storage and suppressor chokes.

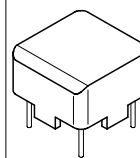
With molded-in pins \varnothing 0,6 mm.

Only fully pinned available.

Standard material: Ultramid A3 X2 G5, black.

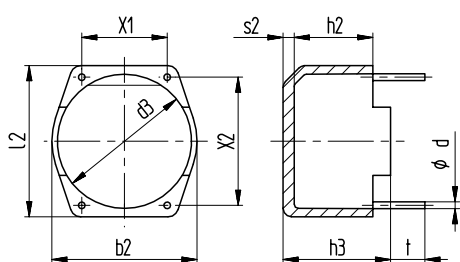
Special material on request.

Box for toroids,
horizontal version



b1 $\pm 0,2$	b2 $\pm 0,2$	h2 $\pm 0,2$	h3 $\pm 0,2$	l1 $\pm 0,2$	l2 $\pm 0,2$	s2 $\pm 0,2$	t $\pm 0,3$	X1 $\pm 0,3$	X2 $\pm 0,3$	X3 ^①	Type	Art. No.	
12	14	6	9	12	14	1	4	10	10	4	VDL 11 x 9	Wz 7847	3594

Sketch with main dimensions



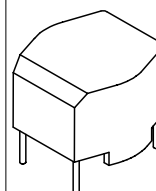
Preferably used for storage and suppressor chokes.

With molded-in pins \varnothing 0,8 mm.

Only fully pinned available.

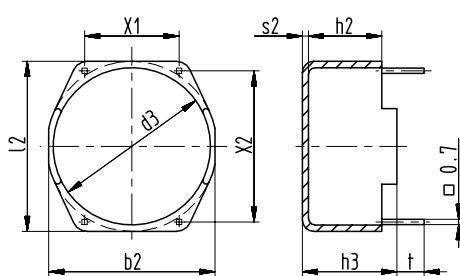
Standard material: Ultramid A3 X2 G5, black.

Box for toroids,
horizontal version



b2 $\pm 0,2$	d $\pm 0,2$	d3 $\pm 0,2$	l2 $\pm 0,2$	h2 $\pm 0,2$	h3 $\pm 0,2$	s2 $\pm 0,2$	t $\pm 0,3$	X1 $\pm 0,3$	X2 $\pm 0,3$	X3 ^①	Type	Art. No.	
17,2	0,8	15,5	18	9,2	12,6	1,3	4	10	15	4	VDL 15 x 12,5	Wz 7812	3629
21,5	0,8	19,8	22,5	10,1	13,2	1,1	4	12,5	20	4	VDL 19 x 13	Wz 7827	3642
27,5	0,8	25,6	28,3	13,4	16,5	1,3	4	15	25	4	VDL 26 x 16,5	Wz 7817	3608

Sketch with main dimensions



Preferably used for storage and suppressor chokes.

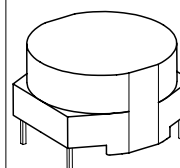
Supplied with pins \square 0,7 mm.

Standard: fully pinned.

Standard material Ultramid A3 X2 G5, black.

Special materials on request.

Box for toroids
horizontal version



b2 $\pm 0,2$	d $\pm 0,2$	d3 $\pm 0,2$	l2 $\pm 0,2$	h2 $\pm 0,2$	h3 $\pm 0,2$	s2 $\pm 0,2$	t $\pm 0,3$	X1 $\pm 0,3$	X2 $\pm 0,3$	X3 ^①	Type	Art. No.	
22,5	\square 0,7	20,9	22,6	8,7	11,4	0,8	3,5	12,5	20	4	VDL 20 x 11,5	Wz 7619	3337
22,2	\square 0,7	20,9	22,6	9,7	12,7	0,8	3,5	12,5	20	4	VDL 20 x 12,5	Wz 7558	3193
26,8	\square 0,7	25,7	27,7	13,4	16,1	0,8	3,5	15	20	4	VDL 25 x 16	Wz 7563	3207
32,6	\square 0,7	31,5	33,2	15,7	19,2	0,8	3,5	20	30	4	VDL 31 x 19	Wz 7571	3219
41,7	\square 0,7	40,2	42,5	21	24,3	0,8	3,5	15	40	4	VDL 40 x 24,5	Wz 7584	3222

^① X3 = max. number of slots or terminals