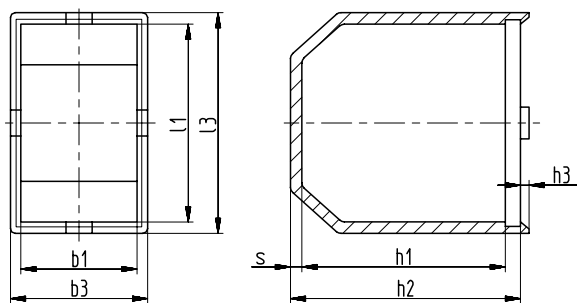
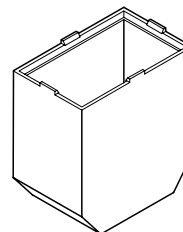


Sketch with main dimensions



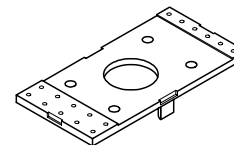
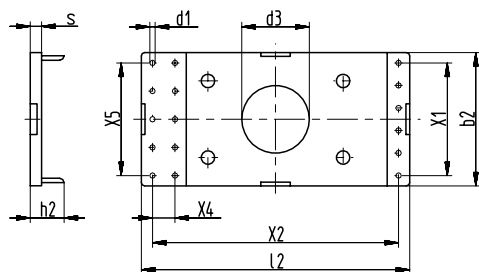
Matching pin frames for these boxes as shown below. They enable direct extension of wire or additional pins for vertical PCB mounting.

Box for toroids, vertical version



b1	b3	h1	h2	h3	l1	l3	s
±0,2	±0,2	±0,2	±0,2	±0,1	±0,2	±0,2	±0,15
28,3	30,8	58,6	62	-	58,4	60,8	1,1

Sketch with main dimensions



b2	d1	d3	h2	l2	s	X1	X2	X3 ①	X4	X5
±0,2	±0,1	±0,2	±0,2	±0,2	±0,1	±0,2	±0,2		±0,15	±0,2
29,6	0,8	15	7,8	59,8	2,6	5x5	55,2	1x6 2x5	5	4x6,25

① X3 = max. number of slots or terminals

Materials PA 6 - Durethan BG 30X, grey- Class B (130°C) - UL 94-HB

www.FERYSTER.pl

FERYSTER® spółka jawna B. i Z. Sobków
 PRODUCENT ELEMENTÓW INDUKCYJNYCH

TOR-V-58x28 (2793) VR/VRS